



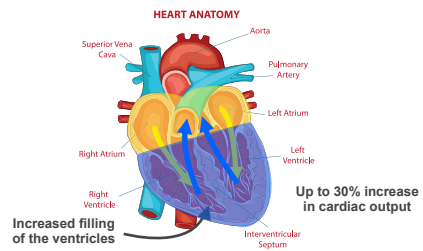
Common pacemaker problems and resolutions

Pacemaker syndrome

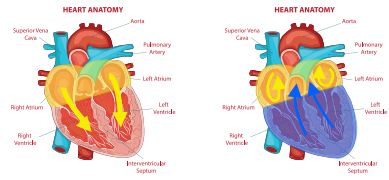
Pacemaker syndrome



A variety of symptoms caused by a pacemaker



Physiological heartbeat



Reduced cardiac output

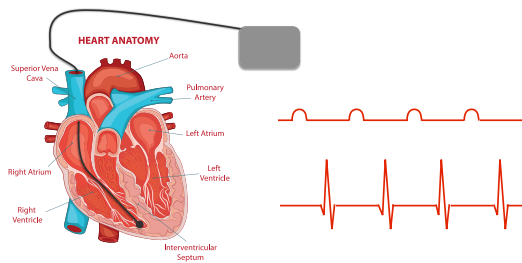
Atria contract against closed valves

Dyssynchrony

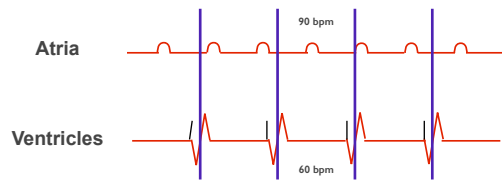
Pacemaker timing



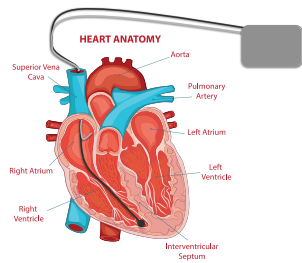
When a pacemaker's timing is off dyssynchrony occurs.



VVI with atrial activity



VVI with atrial activity



The treatment for pacemaker syndrome

Takeaway message



Pacemaker syndrome occurs when the pacemaker cannot synchronize the atria and the ventricles.
